

eucaLimus

Sirolimus Eluting Stent System

Cardiology
Solutions

Sirolimus Eluting
Stent System

Stent Details

TYPE OF DESIGN	Slotted tube, open-cell design with 3 interlinks per segment
DESIGN DETAILS	9 crowns per ring segment
MATERIAL	Cobalt chromium L 605 alloy
EXPANSION RANGE	2.25 mm - 4.00 mm
STRUT THICKNESS	0.0026" (65 µm)
STRUT WIDTH (MAIN SEGMENT)	0.0028" (72 µm)
STRUT WIDTH (INTERLINK)	0.0023" (58 µm)
SHORTENING AFTER EXPANSION	< 2%
MECHANICAL RECOIL	< 5%
METAL COVERAGE	< 15%
SIROLIMUS MATRIX THICKNESS	3-5 µm
GUIDING CATHETER COMPATIBILITY	5 F

Stent Delivery System Details

USABLE LENGTH	138 cm
LENGTH OF GUIDE WIRE LUMEN	27 cm
MATERIAL	Balloon: Proprietary polyamid compound Distal shaft: Polyamide, multilayer tube Proximal shaft: Stainless steel, PTFE coated
SHAFT SIZE	Proximal: 1.9 F Distal: 2.8 F
COATING	Hydrophilic shaft coating
BALLOON FOLDING	3-fold balloon
MARKER BANDS	Embedded Platinum/Iridium
TIP PROFILE	0.017" (0.43 mm)
MAX. RECOMMENDED GUIDE WIRE	0.014" (0.36 mm)

Order Information

Stent Length	8 mm	10 mm	13 mm	16 mm	18 mm	23 mm	28 mm	33 mm	38 mm	43 mm	48 mm
2.25 mm	ELM22508	ELM22510	ELM22513	ELM22516	ELM22518	ELM22523	ELM22528	-	-	-	-
2.50 mm	ELM25008	ELM25010	ELM25013	ELM25016	ELM25018	ELM25023	ELM25028	ELM25033	ELM25038	ELM25043	-
2.75 mm	ELM27508	ELM27510	ELM27513	ELM27516	ELM27518	ELM27523	ELM27528	ELM27533	ELM27538	ELM27543	ELM27548
3.00 mm	ELM30008	ELM30010	ELM30013	ELM30016	ELM30018	ELM30023	ELM30028	ELM30033	ELM30038	ELM30043*	ELM30048*
3.25 mm	ELM32508	ELM32510	ELM32513	ELM32516	ELM32518	ELM32523	ELM32528	ELM32533	ELM32538	ELM32543*	ELM32548*
3.50 mm	ELM35008	ELM35010	ELM35013	ELM35016	ELM35018	ELM35023	ELM35028	ELM35033	ELM35038	ELM35043*	ELM35048*
4.00 mm	ELM40008	ELM40010	ELM40013	ELM40016	ELM40018	ELM40023	ELM40028	ELM40033	ELM40038	ELM40043*	ELM40048*

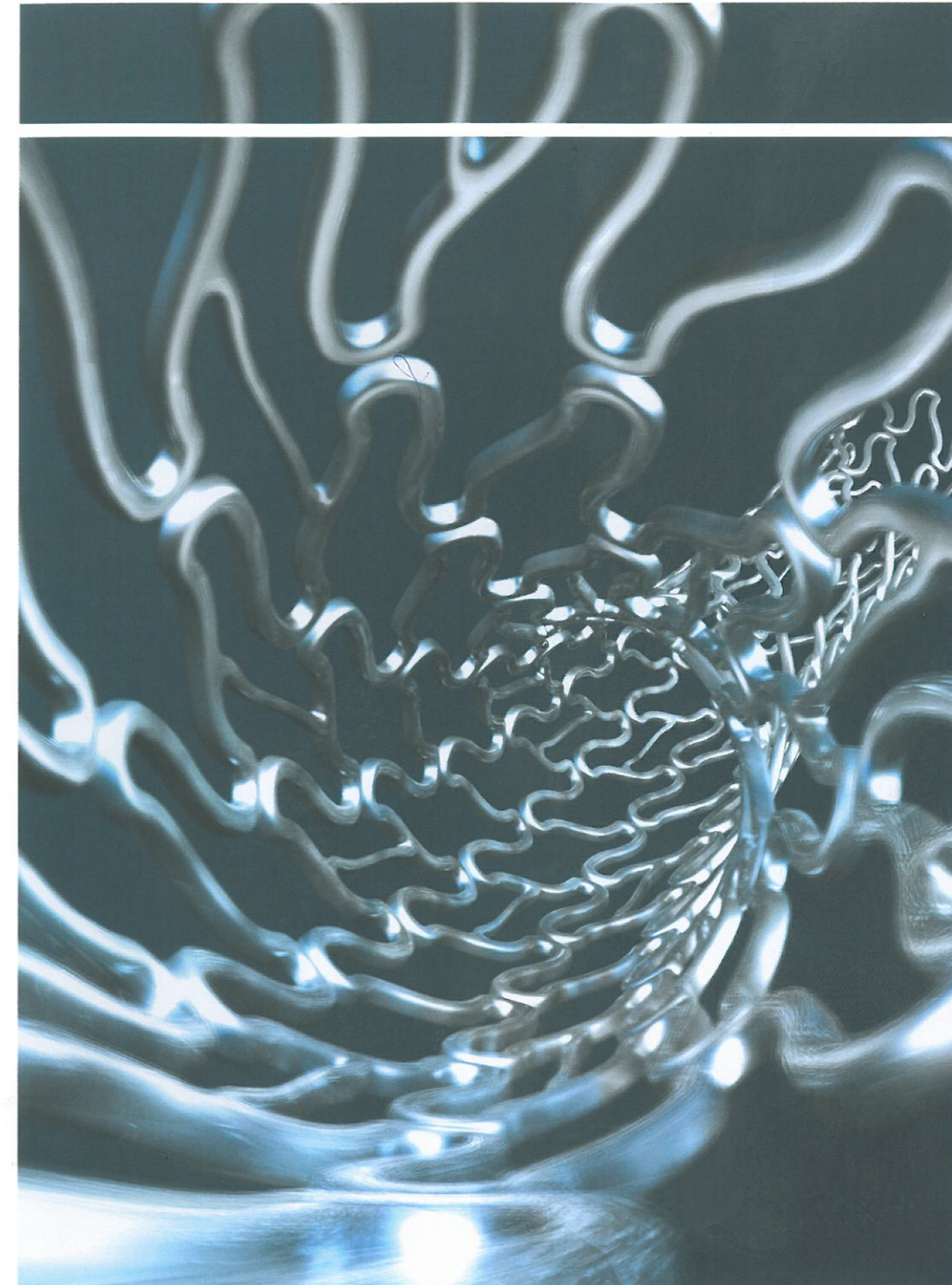
* Sizes on request.
Min. order quantity
20 pcs. per size

eucaLimus

Sirolimus Eluting Stent System

Cardiology
Solutions

Sirolimus Eluting
Stent System



Cobalt Chromium Platform
Biodegradable Matrix
Lengths up to 48 mm

eucatech AG

Gottlieb-Daimler-Str. 2 Phone +49 7623 71 77 0 info@eucatech.de
79618 Rheinfelden, Germany Fax +49 7623 71 77 177 www.eucatech.com CE01014



Quality Made in Germany
REV. ELM-EN-1.1 05/2014

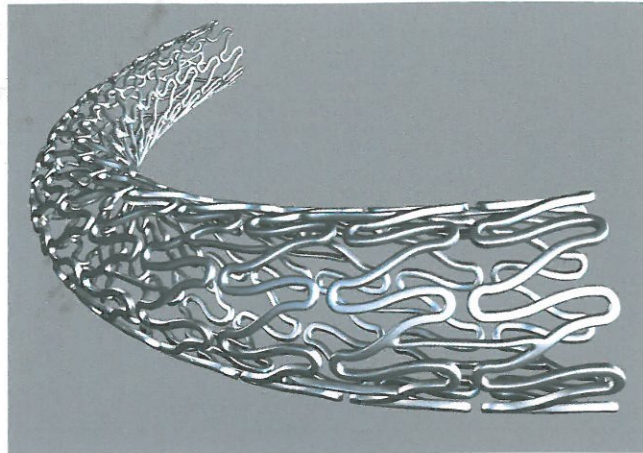


Quality Made in Germany

eucaLimus

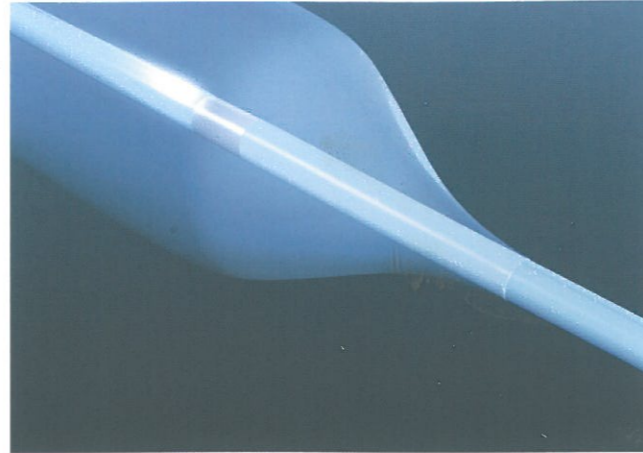
Sirolimus Eluting Stent System

Stent Design



- Trusted Cobalt Chromium
- 3-interlink design for flexibility
- Uniform scaffolding and perfect support on a bend

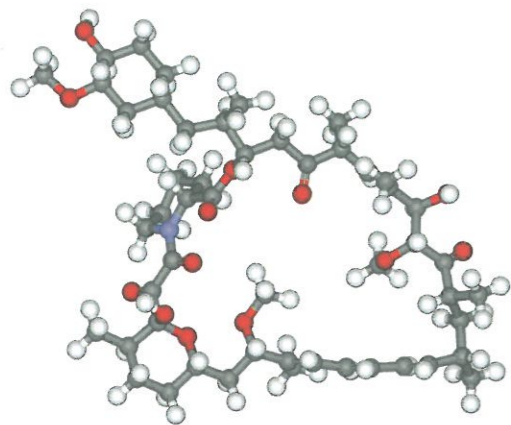
Stent Delivery Catheter



- Excellent deliverability and confident deployment

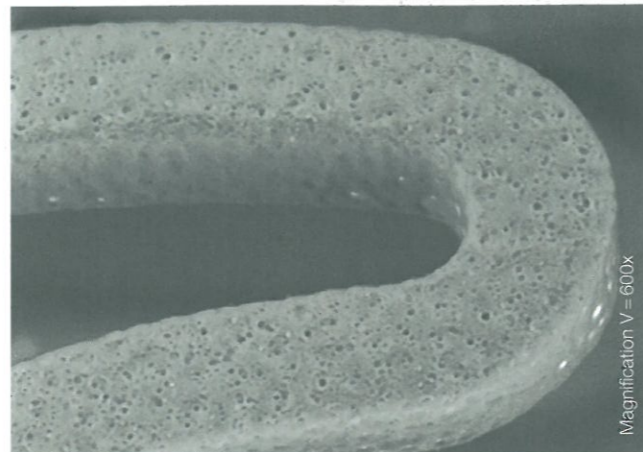
...SAFETY ...EFFICACY ...DELIVERABILITY

Drug: Sirolimus



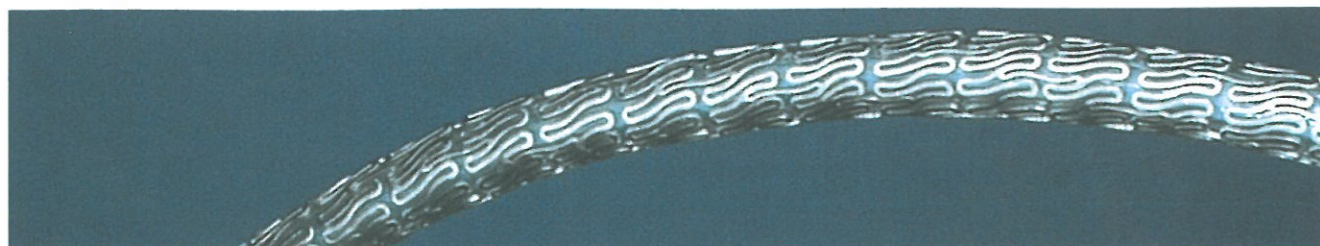
- Proven anti-proliferative agent
- Cytostatic mechanism of action that leaves vessels healthy and viable without destroying them

Polymer: PLGA 85/15



- Biocompatible PLGA polymer for safety and efficacy with excellent structural integrity and 100 % drug release

A highly deliverable Thin-Strut Drug Eluting Stent

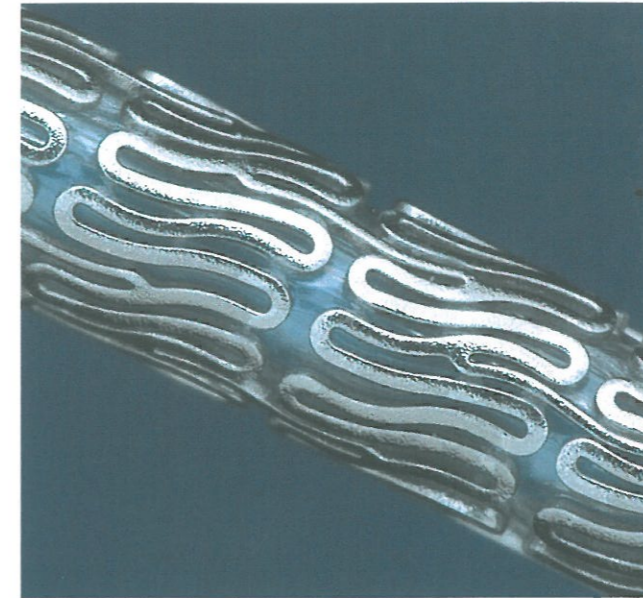


eucaLimus

Sirolimus Eluting Stent System

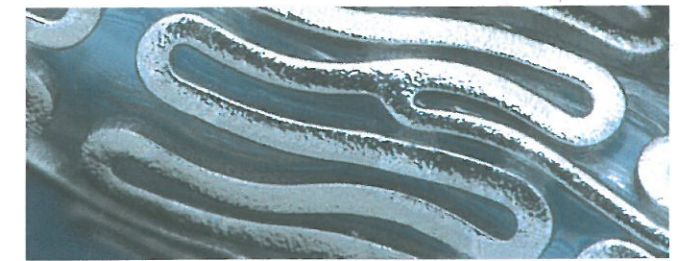
Coating Technology

Controlled Drug Release – Polymer PLGA 85/15

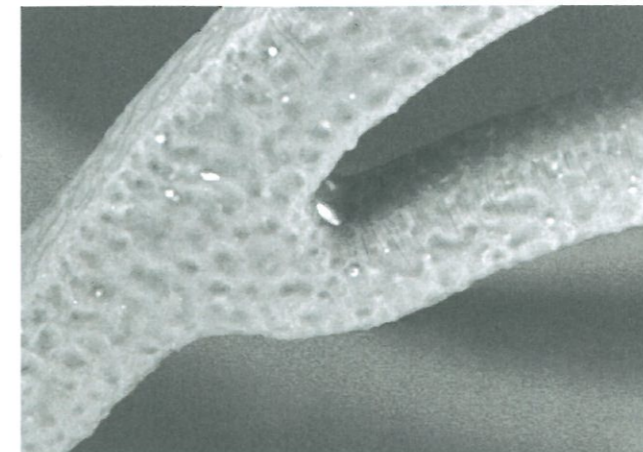


Magnification V = 100x

- Provides consistent, controlled 100 % release of Sirolimus
- Maintains integrity during delivery, implantation and expansion
- Assures biocompatibility
- Drug dose: 1.4 $\mu\text{g}/\text{mm}^2$



Magnification V = 200x

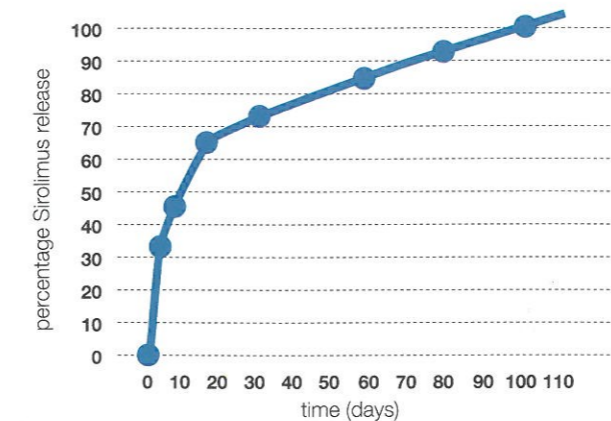


Magnification V = 600x

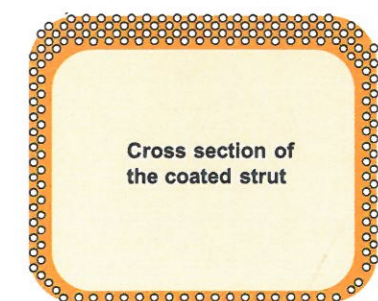


Magnification V = 200x

In-Vivo Release Kinetic



Matrix Thickness
Abluminal Side: ~ 5 μm



Matrix Thickness
Luminal Side: ~ 2.5 μm